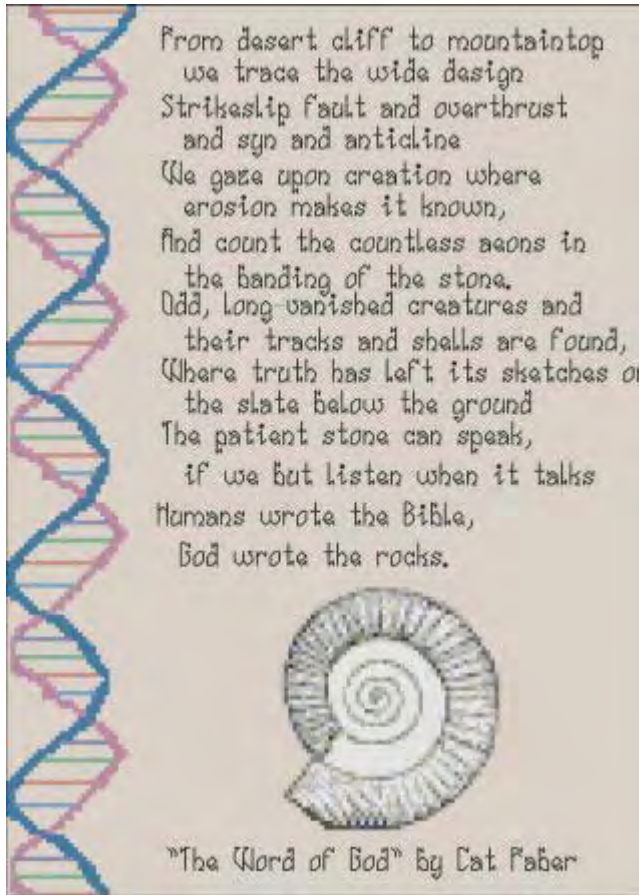


The Word of God



Designed by:

Cynthia Armistead

This piece was inspired by the song "The Word of God" by Catherine Faber, recorded by Echo's Children on the CD Under the Gripping Beast. Cat retains copyright to her lyrics, which are used with her permission.

I cannot recommend the song or the group strongly enough. Visit them at <http://www.echoschildren.org/>

Total Stitches: 143w X 199h

Fabric: Any evenweave (not Aida)

The ammonite is stitched over one thread. The rest of the design is stitched over two threads.

All backstitching is done with black floss.



Supplies

X	Petite	DMC	Anchor	Color
		DMC 518	1039	Wedgewood-LT
		DMC 3727	1016	Antique Mauve-LT
		DMC 758	882	Terra Cotta-VY LT
		DMC 160	136	Gray Blue-MD
		DMC 519	1038	Sky Blue
		DMC 563	208	Jade-LT
		DMC 317	400	Pewter Gray
		DMC White	2	White
		DMC 3024	397	Brown Gray-VY LT
		DMC 3023	215	Brown Gray-LT
		DMC 822	390	Beige Gray-LT
		DMC 451	233	Shell Gray-DK
		DMC 3072	847	Beaver Gray-VY LT
		DMC 647	1040	Beaver Gray-MD
		DMC 646	8581	Beaver Gray-DK
		DMC 159	140	Gray Blue-LT
		DMC 762	234	Pearl Gray-VY LT
		DMC 310	403	Black
		DMC 792	941	Cornflower Blue-DK

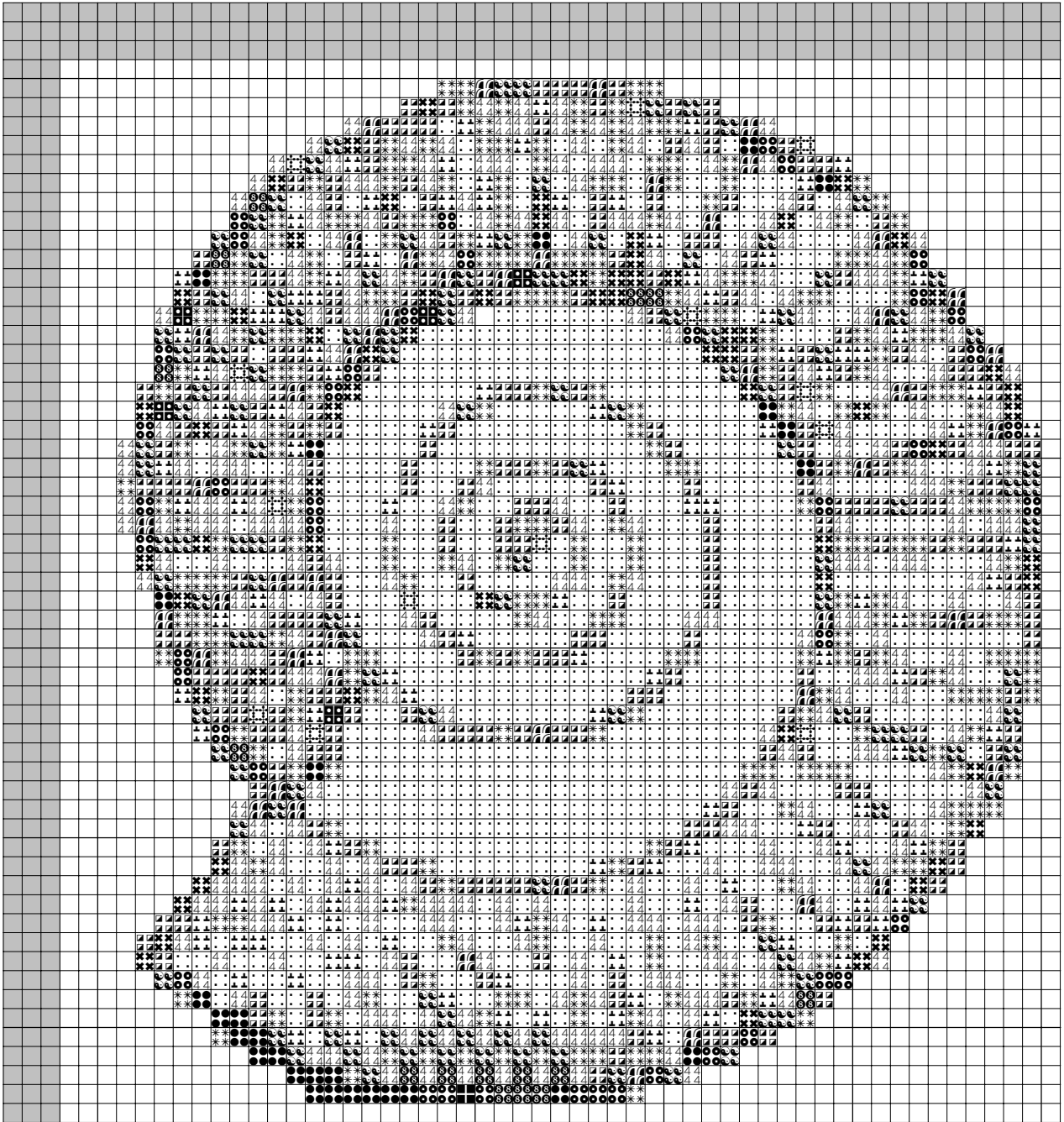
The Word of God



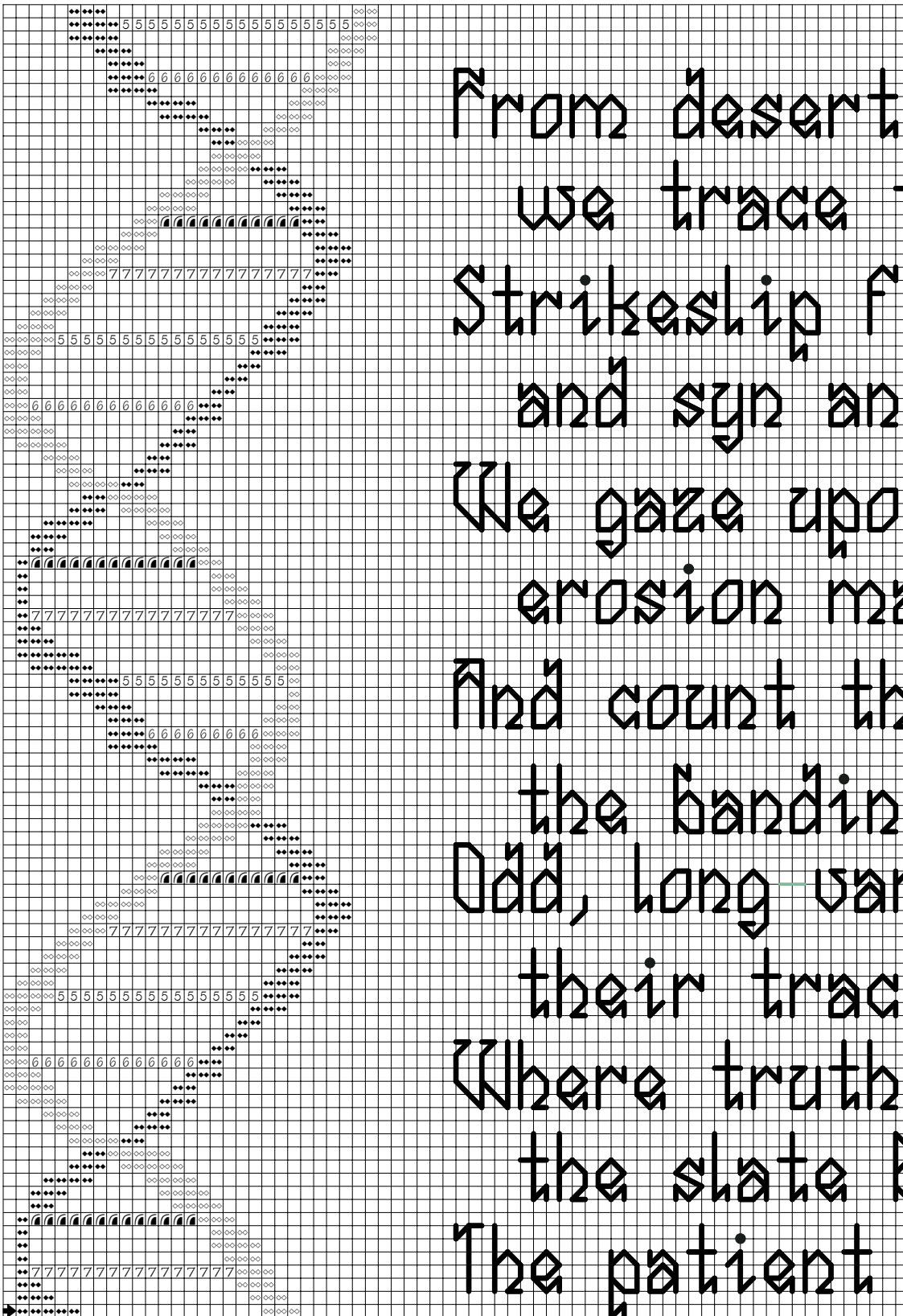
DMC 844

1041

Beaver Brown-UL DK



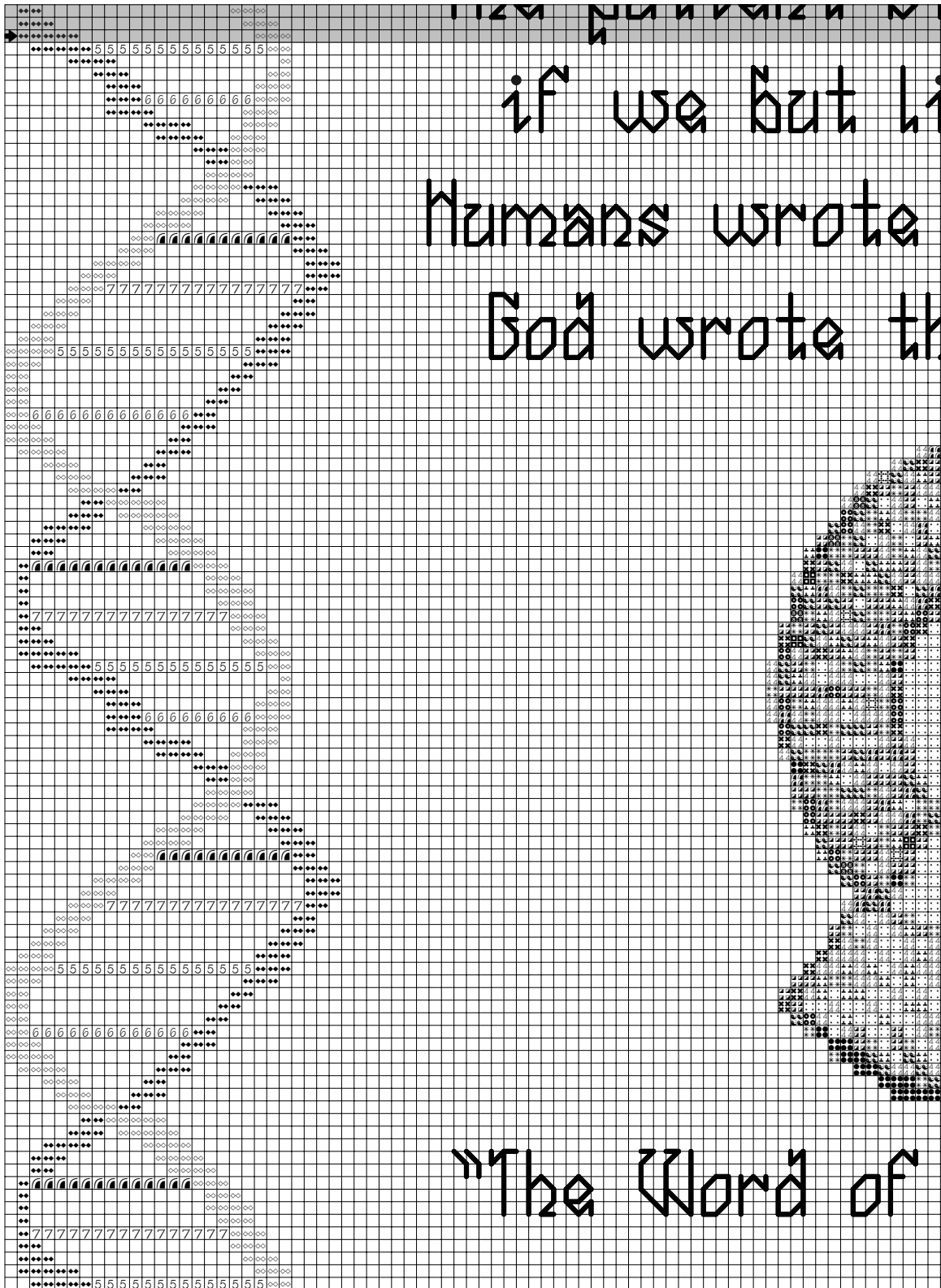
The Word of God



The Word of God

from cliff to mountaintop
the wide design
of fault and overthrust
and anticline
on creation where
it takes its known,
the countless aeons in
the life of the stone.
Fossilized creatures and
fish and shells are found,
and has left its sketches on
below the ground
the stone can speak,

The Word of God



The Word of God

listen when it talks
the Bible,
the rocks.

"God" by Cat Faber